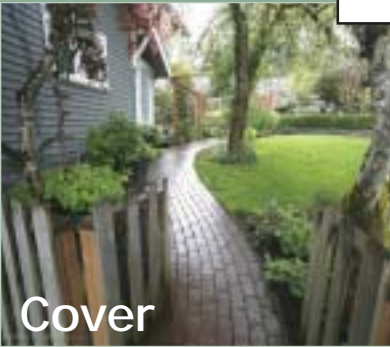


Creswell



East Eugene



Cover

Over 900' on year-round Bear Creek and 11.9 acres of gardens and pastures offer the best of country living just minutes from Eugene. Located near Pleasant Hill, this charming vintage home has been beautifully restored and modernized while maintaining the character of the original 1900 farmhouse. There are 3 bedrooms, 2 baths and very open living. The gourmet kitchen, with gas cooking, overlooks artfully crafted gardens that surround the house. A separate art studio/guesthouse, complete with half bath, opens to a spacious deck overlooking the creek. The acreage is cross-fenced with non-climb fencing. The 4-stall barn includes a hay loft. There is a separate 50' x 80' indoor riding arena and more.

\$509,900
Gail Newton

Located in a prime neighborhood near Hendricks Park and the U of O this charming Craftsman Bungalow has been restored and modernized to enhance the original construction in 1890. The living/dining rooms with maple floors look out on the wonderful sitting porch. A 1979 remodel expanded the upper level to include 3 bedrooms and a bath with adjacent sauna. In 2005 a main level master bedroom with sitting area and access to a charming patio with hot tub was added. The adjacent bath was also enhanced and includes a claw foot tub and separate shower. The spacious kitchen with nook overlooks the beautifully landscaped yard and is plumbed for gas cooking. There is a full dry basement with garage area under original house and much more.

\$515,000
Gail Newton



Dexter

Located in a private setting on 5.9 acres this cozy 3 bedroom, 2 bath home overlooks year-round Gosage Creek. The house has had much recent updating...new roof, paint in and out plus new vinyl windows and wood stove. An extra deep 2-car, detached garage was built in 1995 from timber harvested from the property. It includes an additional 336 sq. ft. of finished/heated space above the garage. A truck-sturdy bridge allows access

across the creek to a football field-sized meadow with fenced garden area and a large shed with chicken coop. The hillside includes approximately 50,000 bf of timber. There is an excellent well.

\$365,000 **Gail Newton**

Elmira

This is a wonderful end of road setting that includes a very well maintained and appealing 1984 manufactured home plus a modest, 3 bedroom, 2 bath, stick-built house that is very separate. The manufactured home has a 2-year old heat pump, a new wood stove plus newer roof, flooring, appliances and more. There is an oversized, extra-deep, 2-car garage built in 1997, a 200 sq. ft. finished and heated shop and a 24' x 13' horse barn. There are several acres of level lawn area. The back yard lawn is surrounded by chain-link fencing and includes several apple trees. 15 acres, in timber deferral, were replanted with 6000 fir trees in 1997. There is a spring-fed pond.



\$350,000 **Gail Newton**



GAIL NEWTON
BROKER
GRI, CRS, CRB

541-484-9381
541-484-2463 EVES.
gn@unique.cc

www.unique.cc



Kathleen Snyder, Broker

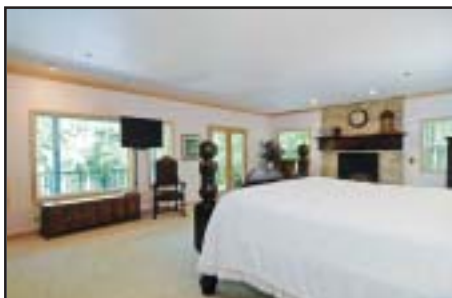
(541) 688-0602
(541) 954-7602
Hybrid Real Estate
ksnyder174@gmail.com



www.hybridrealestate.org



Beautiful South Eugene acreage with two homes. This historical ranch was originally homesteaded in the early 1900's. It features over 330 acres of pasture, ponds and creek. There are well maintained outbuildings including hay storage, cattle feeding barn, two-level shop with bath, horse barn and equipment storage. It is located close to UofO and LCC and only a short drive to downtown. Offered at **\$1,900,000**



Own a slice of Paradise! Pristine McKenzie riverfront property, 3600 Sq. ft., perfect for B&B, corporate retreat or personal residence. Full length decks, views of pond, river and natural surroundings. EZ access to river, entertain from covered bar and BBQ. Spacious home, 4 bedrooms, each with bath. Great master suite with fireplace. Gourmet kitchen with granite, pellet stove and massive storage. Additional lot (\$170K) available and to be sold with home. **\$785,000**



Crow Valley property featuring a beautifully restored farmhouse, 2900 sq. ft., 4 bedrooms, 3.5 baths, formal dining room with fireplace, master suite with fireplace, granite counters in country kitchen, large sweeping deck with gazebo, over 26 timbered acres of serene privacy. Just 15 minutes to W. 11th. Offered at **\$519,500**